



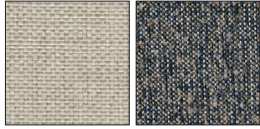
York 136"x93" four-piece sectional with left-arm chaise in Summer linen.

YORK COLLECTION

Room&Board®

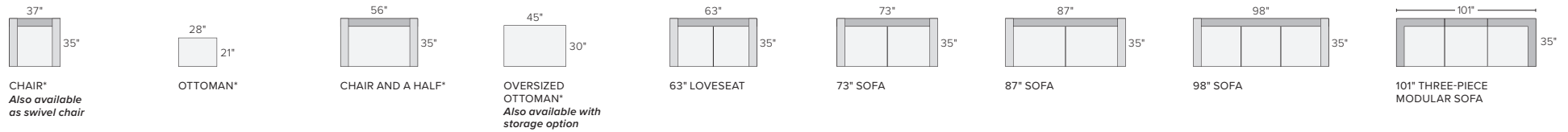
YORK

STOCKED FABRIC OPTIONS

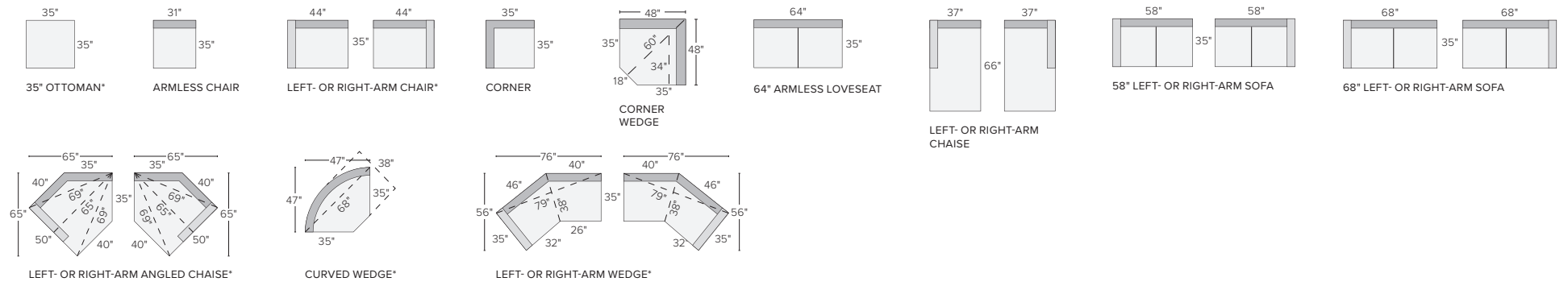


SUMNER LINEN CONLEY NAVY

sofa + chair collection

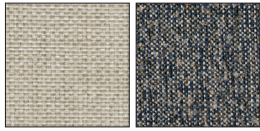


sectional pieces



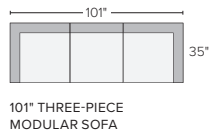
YORK

STOCKED FABRIC OPTIONS

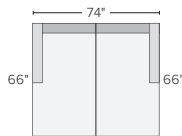


SUMNER LINEN CONLEY NAVY

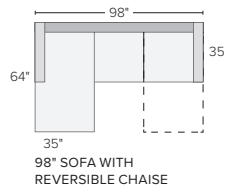
stocked pre-configured sectional options



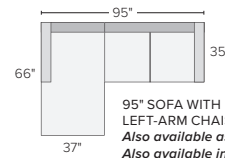
101" THREE-PIECE
MODULAR SOFA



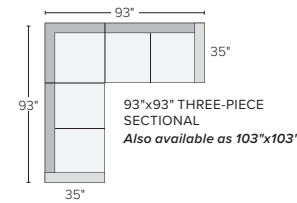
74"x66" TWO-PIECE
SECTIONAL WITH
DOUBLE CHAISE



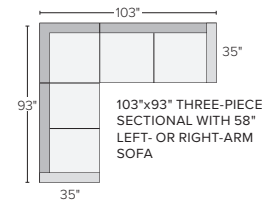
98" SOFA WITH
REVERSIBLE CHAISE



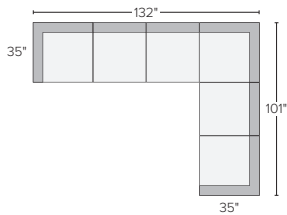
95" SOFA WITH
LEFT-ARM CHAISE
Also available as 105"x66"
*Also available in right-arm
configuration*



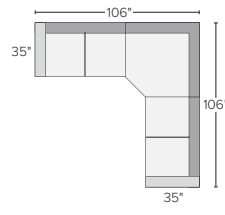
93"x93" THREE-PIECE
SECTIONAL
Also available as 103"x103"



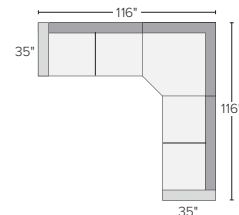
103"x93" THREE-PIECE
SECTIONAL WITH 58"
LEFT- OR RIGHT-ARM
SOFA



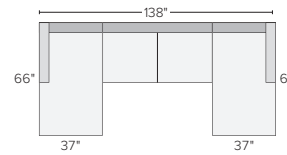
132"x101" SIX-PIECE
MODULAR SECTIONAL



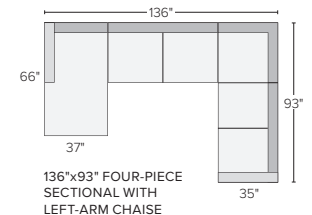
106"x106" THREE-PIECE
SECTIONAL



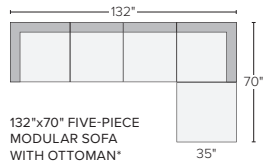
116"x116" THREE-PIECE
SECTIONAL



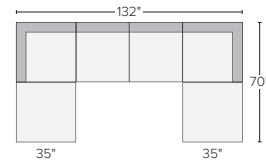
138"x66" THREE-PIECE U-SHAPED
SECTIONAL



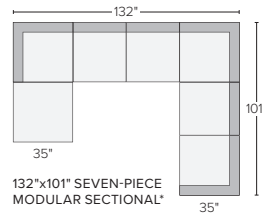
136"x93" FOUR-PIECE
SECTIONAL WITH
LEFT-ARM CHAISE
Also available as 136"x103"
Also available in right-arm configuration



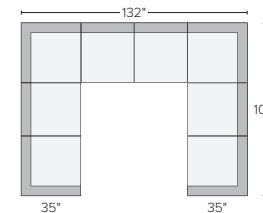
132"x70" FIVE-PIECE
MODULAR SOFA
WITH OTTOMAN*



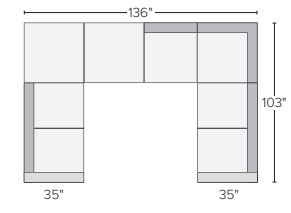
132"x70" SIX-PIECE MODULAR
U-SHAPED SECTIONAL*



132"x101" SEVEN-PIECE
MODULAR SECTIONAL*



132"x101" EIGHT-PIECE
MODULAR SECTIONAL



136"x103" SIX-PIECE
U-SHAPED SECTIONAL*

