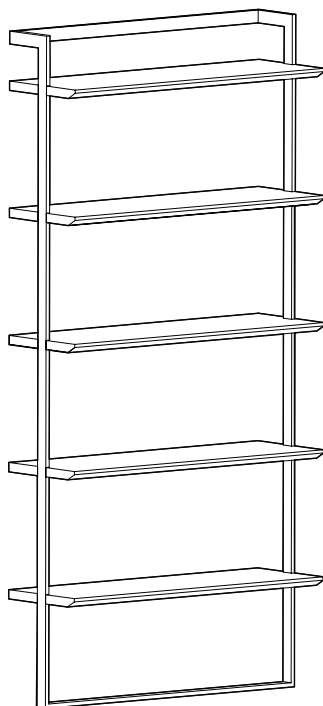


BEAM MODULAR BOOKCASE



Scan to watch the
Beam assembly video



CAUTION

Bookcase **MUST** be attached to wall to avoid tipping.

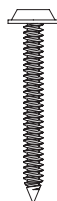
Recommended Tools

- Tape measure
- Stud finder
- Pencil
- Level
- Power drill

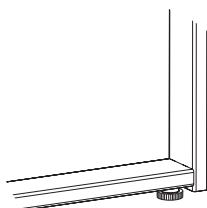
This Product Includes

- A. Beam bookcase
- B. Wall screws (x2)
- C. Leveling feet (attached)

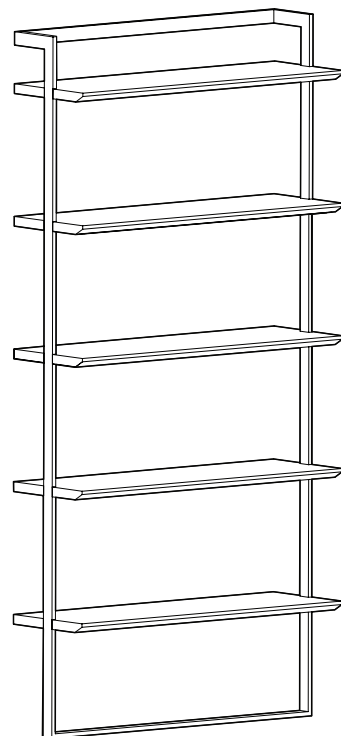
B.



C.



A.



24w 78h
bookcase
shown

Installation Instructions

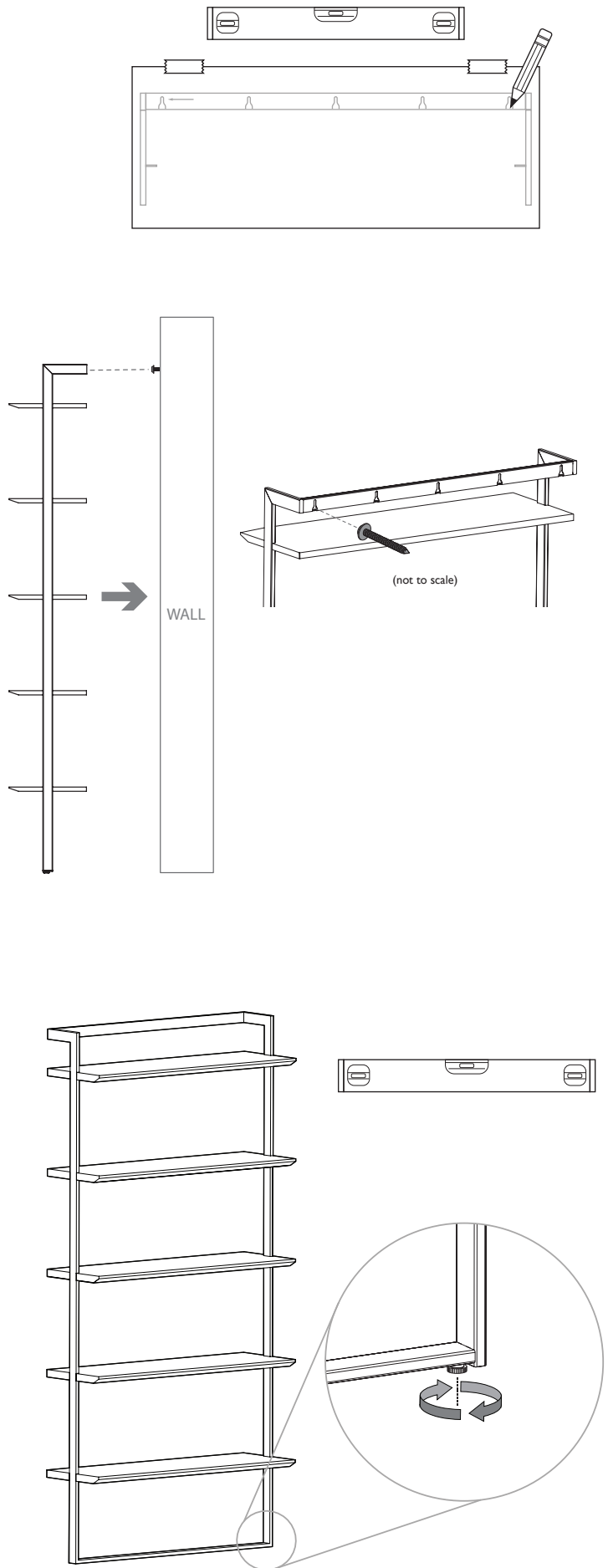
- 1 Determine the desired location for your Beam bookcase. Use tape and a level to place the included paper wall template on your wall, horizontally leveled, with the “measure to here” point at a specific distance above the floor. This height varies for each Beam bookcase height and is either 77 $\frac{9}{16}$ ", 62 $\frac{9}{16}$ ", 47 $\frac{13}{16}$ " or 33 $\frac{1}{16}$ ". Consult your wall template to see the specific “measure to here” point based on the bookcase’s size. The wall template represents the exact, to-scale location of the bookcase frame and its attachment points.

Note: You only need to use two of the bookcase’s attachment points—more are provided than necessary. We recommend aligning at least one of the attachment points with a wall stud. If aligning with a stud is not possible, the bookcase can be securely fastened with the provided drywall anchors.

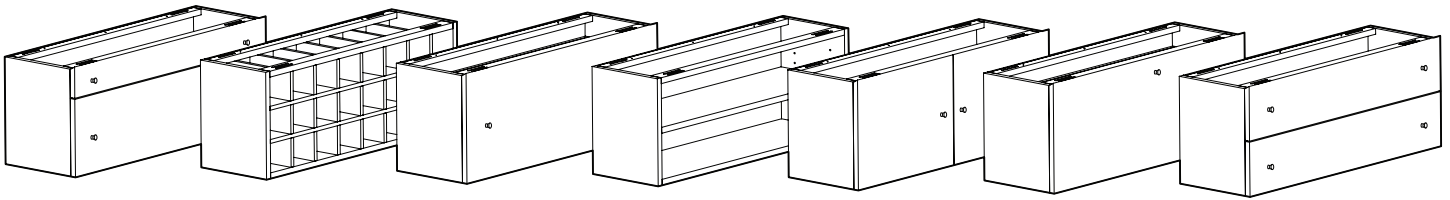
- 2 Use a pencil to make a hole through the paper wall template and mark points on the wall at your chosen attachment points.
- 3 Remove the wall template and install screws into studs or screws into drywall anchors at your marked attachment points.

Note: do not screw the screws in entirely. Leave a small gap between the wall and screw head so the top of the crossbar at the top of the bookcase can slide over the screw head. Make adjustments to the screw depth as needed so the bookcase is tight against the wall.

- 4 Use the levelling feet on the bottom of the bookcase to accommodate variance in floor height. Use a level to ensure your bookcase is level.



BEAM BOOKCASE INSERTS

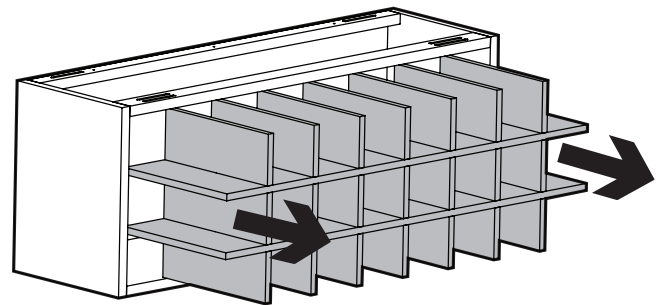
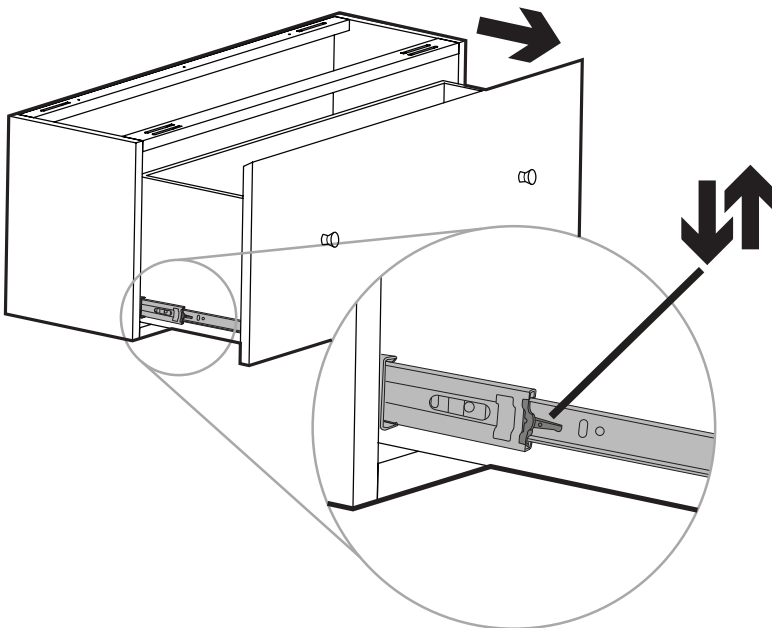


CAUTION

- Read all instructions prior to beginning installation.
- Professional installation is strongly recommended.
- The drop-down surface insert or any insert with drawers should not be installed on the top three shelves.
- Beam bookcases **MUST** be attached to wall prior to installing inserts.

Installation Instructions

- 1 Prepare each insert for installation by removing any drawers, adjustable shelves or partitions so that you can easily access the interior of the insert box.



To remove the wine storage partition, simply pull from the front. The partitions are comprised of multiple individual parts, but must be pulled out as a complete assembly.

To remove drawers, fully extend the drawer and locate the black plastic locking tabs on the side of each drawer glide. Push the tabs up or down in opposing directions to unlock the drawer from the glide. Pull outward as you do so to remove the drawer entirely. To reinstall the drawer, simply push the drawer back on the glide tracks completely.

Scan to watch the
Beam assembly video

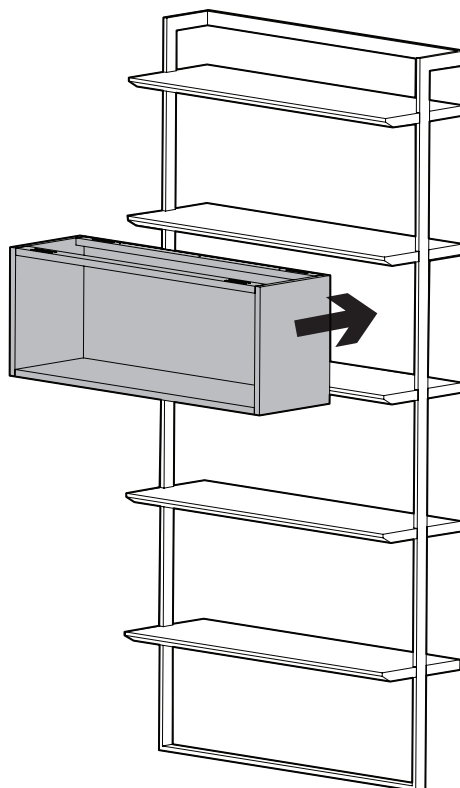


2

Slide the prepared inserts into their intended location between any two shelves of your previously installed Beam bookcase. To avoid damage, slide the inserts straight into the opening with equal force applied to both sides. The back of the inserts should be flush with the back surface of the Beam bookcase shelves.

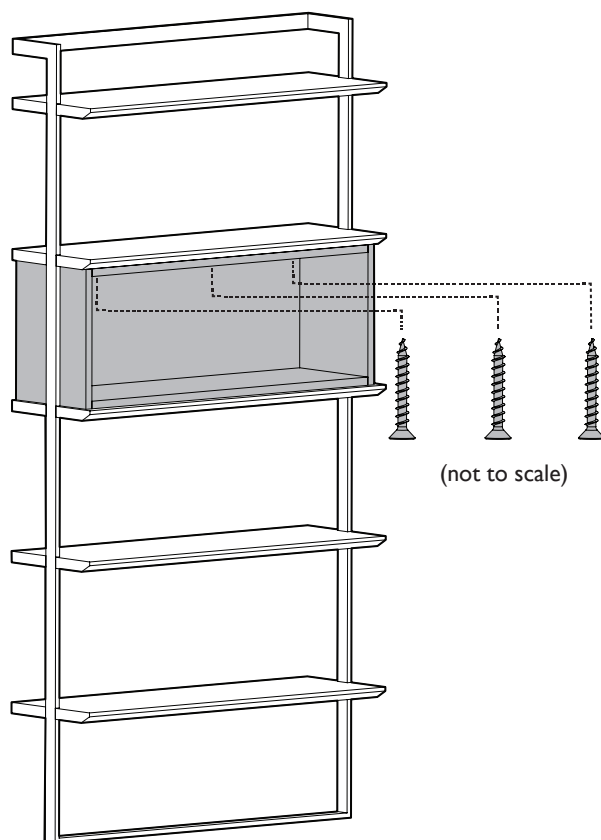
ATTENTION

Inserts with adjustable shelves ship with plastic support brackets to hold the shelves in place. The plastic inserts should be removed and discarded.



3

Locate the pre-drilled pilot holes on the top rear crossbar of the insert. Using the pilot holes as a guide, fasten the insert to the shelf above it using a power drill and the provided wood screws.



4

Reinstall any drawers, partitions or shelves you previously removed from the inserts. Inserts can be removed, repositioned or replaced as desired.