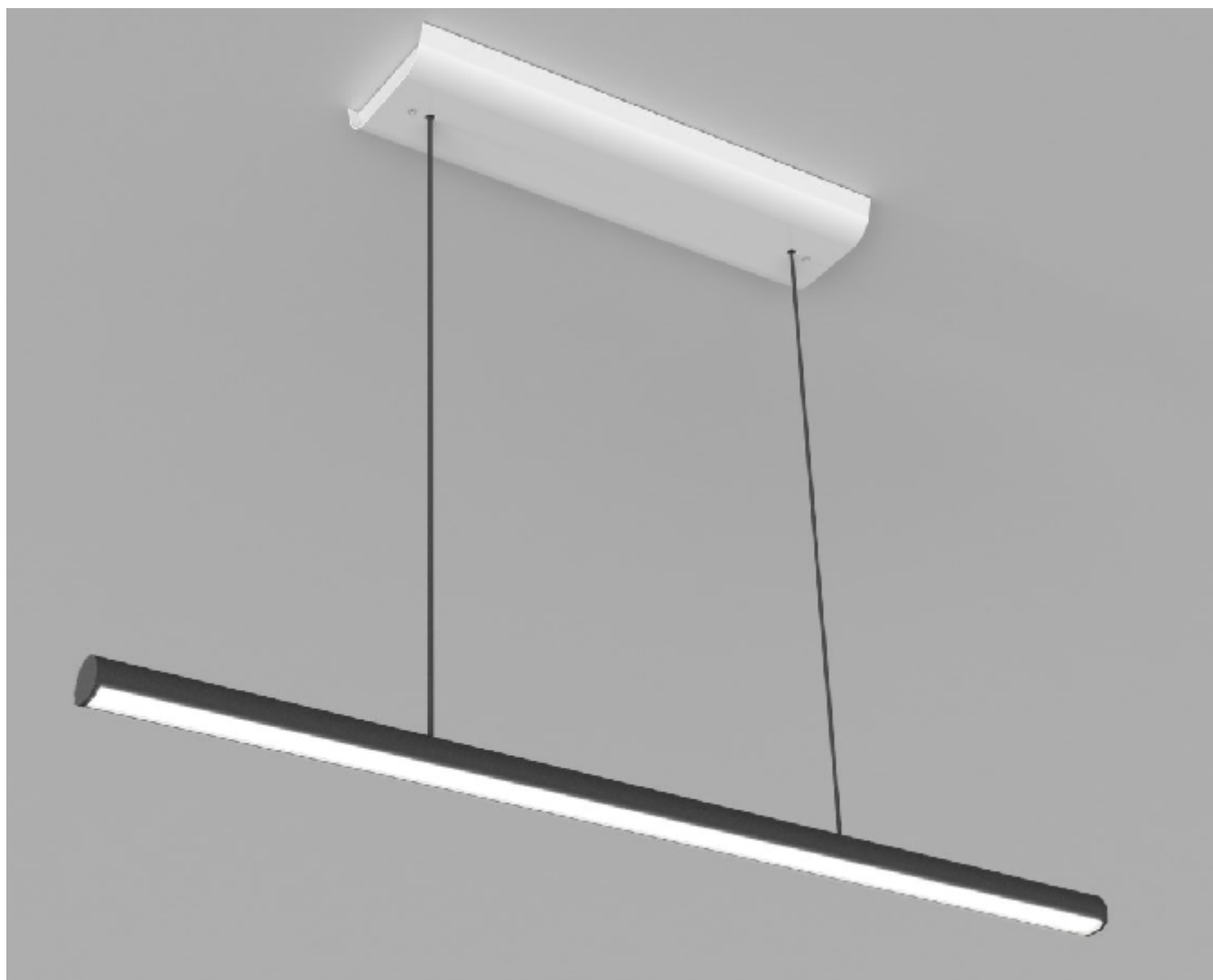


ARCIO

Lumi

Pendant

INSTALLATION & ASSEMBLY INSTRUCTIONS



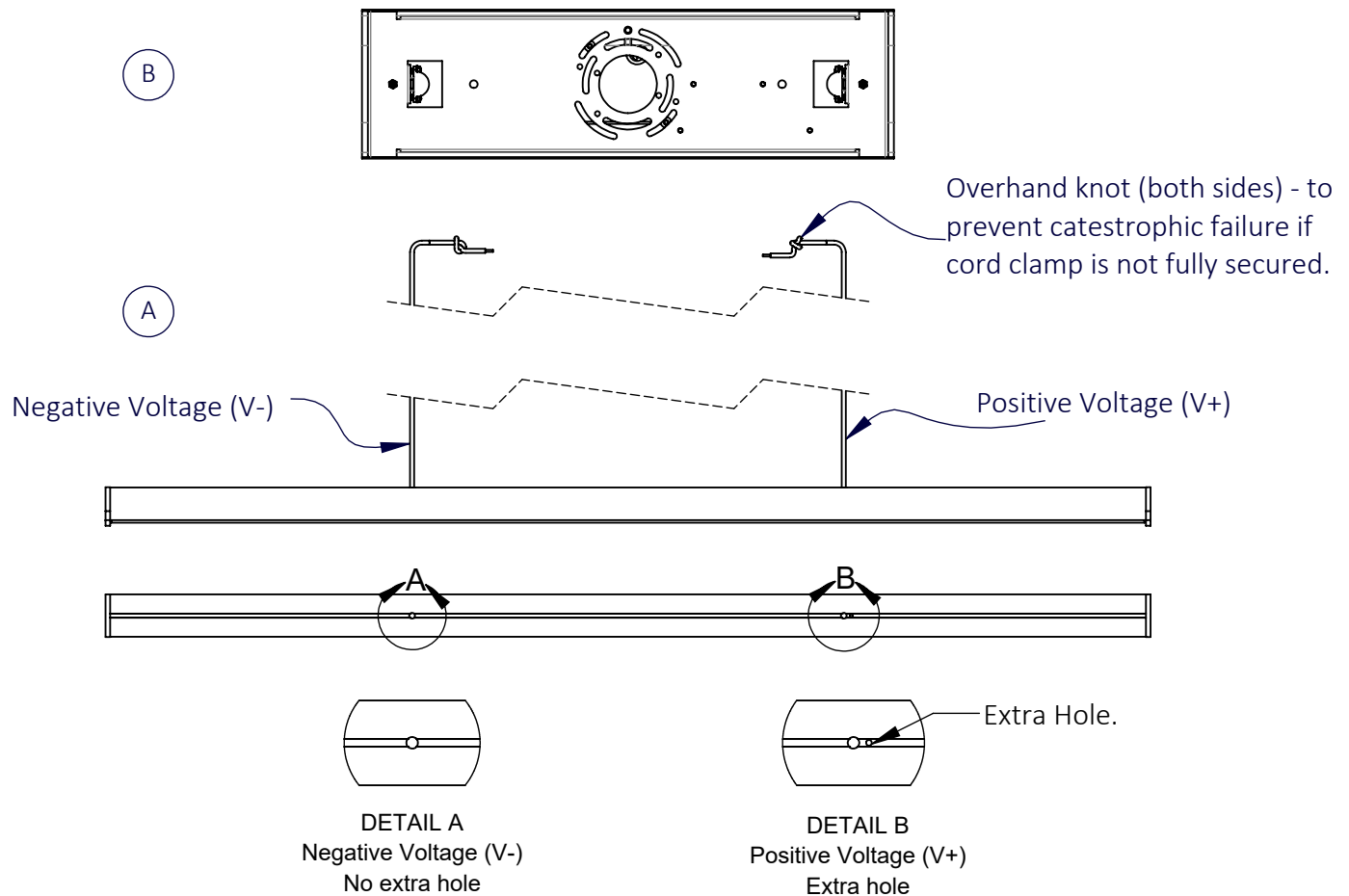
Lumi Pendant

Parts Enclosed

- A - Light Fixture Body
B - Canopy

Tools Needed (not included)

- Phillips Screwdriver
- Junction box mounting screws
- Wire nuts
- Plastic Anchor + wood screws



When using electrical equipment, basic safety precautions should always be followed, including the following:

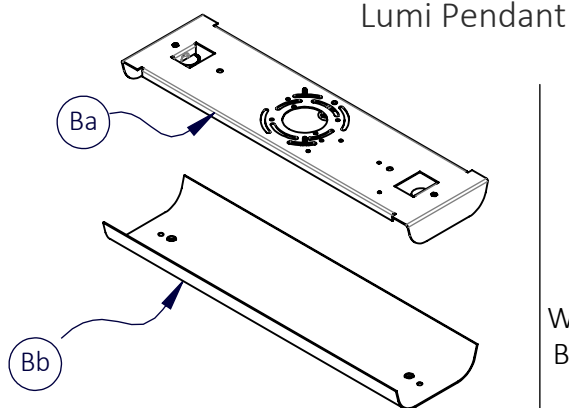
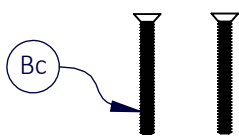
- Read all instructions carefully before installing and save for future use.
- Make sure all connections are in accordance with the National Electrical Code and local regulations.
- To avoid possible electric shock, be sure the power supply is turned off before servicing or installing the fixture
- Service should be performed by qualified personnel.

Canopy Parts

Ba - Canopy Kit

Bb - Cover

Bc - Cover Screws



Lumi Pendant

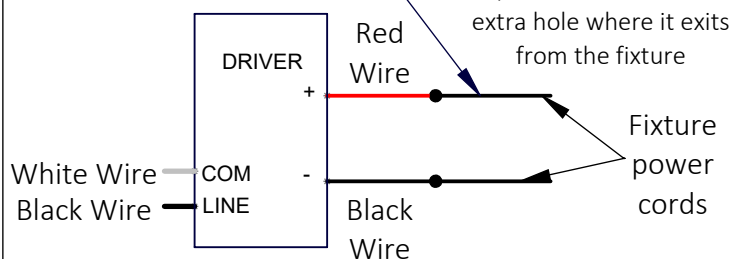
Wiring Diagram

Input Voltage

120VAC

Output Voltage

16-42 VDC



1. Remove the Cover Screws (Bc) and Cover (Bb). Save for later.

2. Fasten the Canopy Kit (Ba) to junction box (Screws provided by others).

3. Connect the White, Black and Green wires per local and national codes (120VAC) and then push them into the junction box.

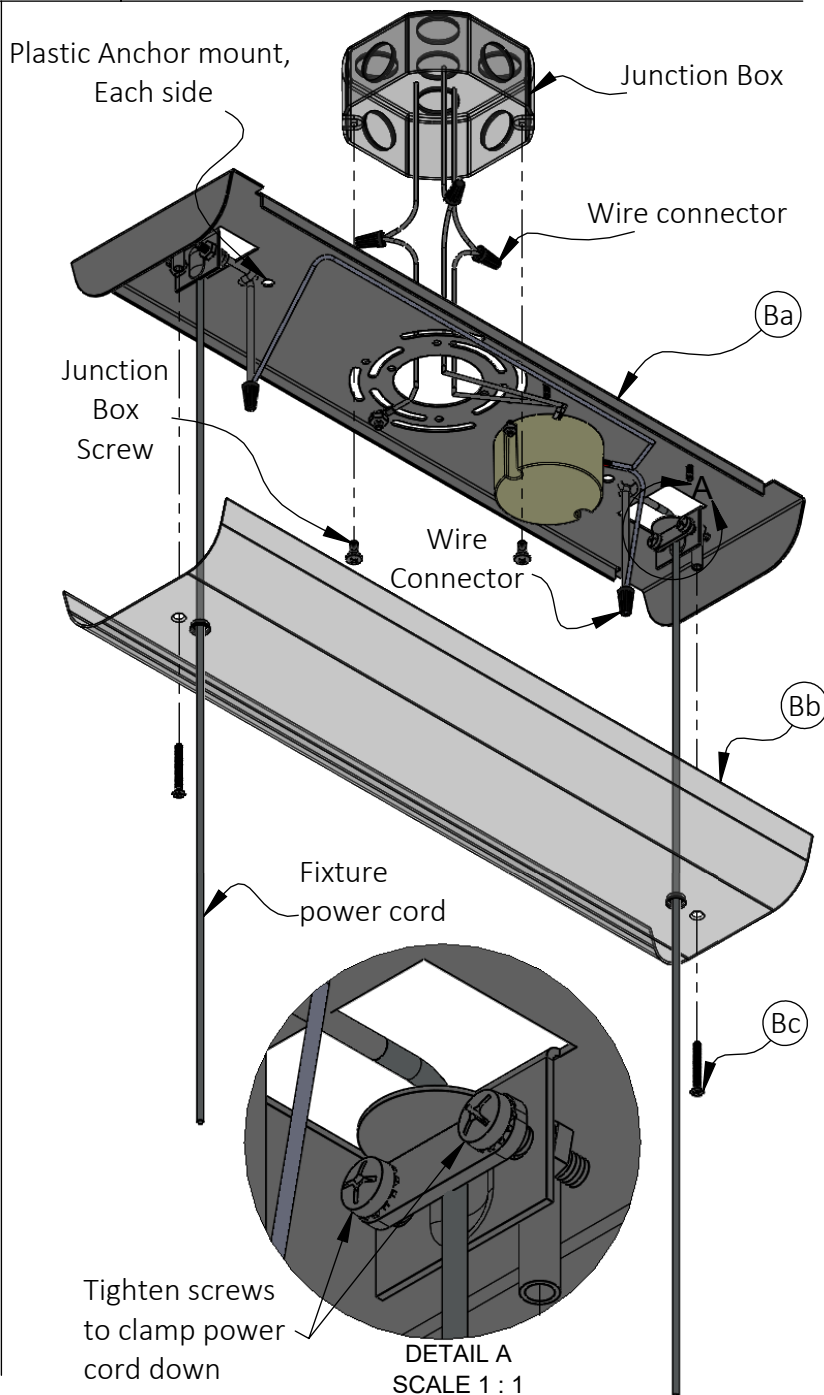
4. Pull the fixture power cords through the two holes in the cover (Bb) and through the clamp on each side of the canopy kit (Ba). Tighten screws on each clamp to hold power cord down and support the weight of the fixture.

5. Tie an overhand knot on both sides - to prevent the fixture from falling if excess weight is applied to the fixture (See page 4).

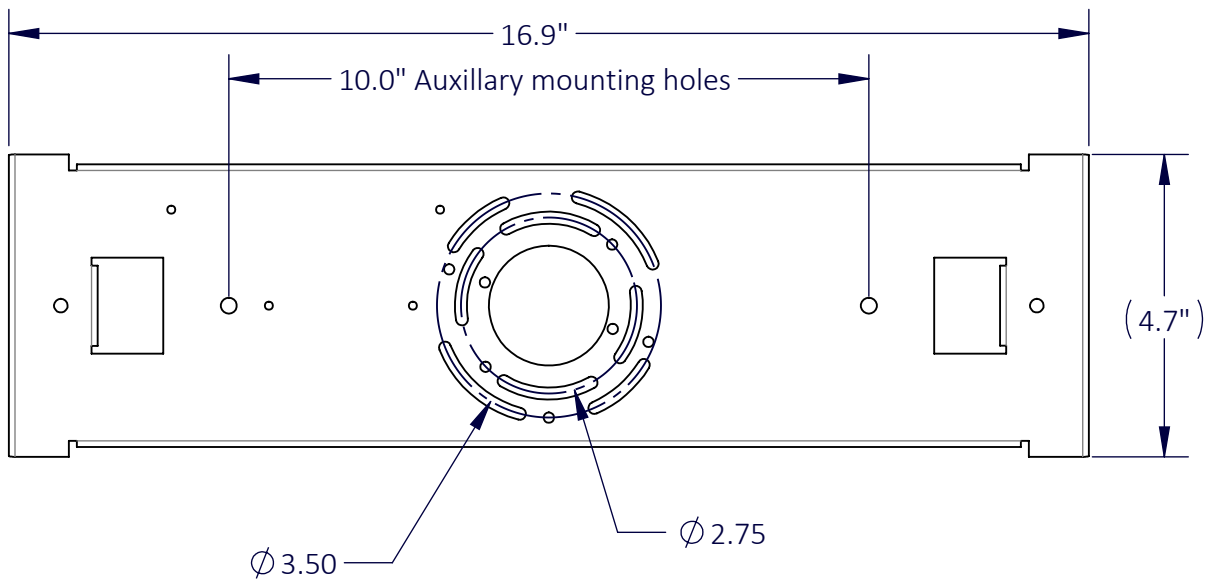
6. Connect the driver to the fixture power cords. (V+) cord to the red wire and (V-) cord to the black wire. The (V+) cord will have an extra hole where it exits from the fixture (see page 2).

7. Lift the Cover (Bb) in place and reinstall the screws (Bc) that were removed in step 1.

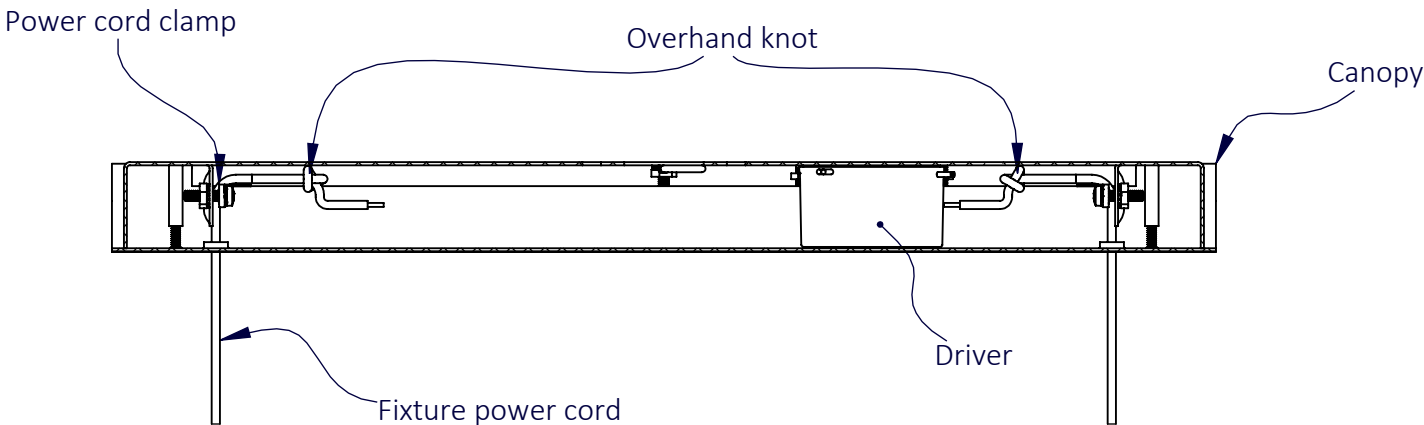
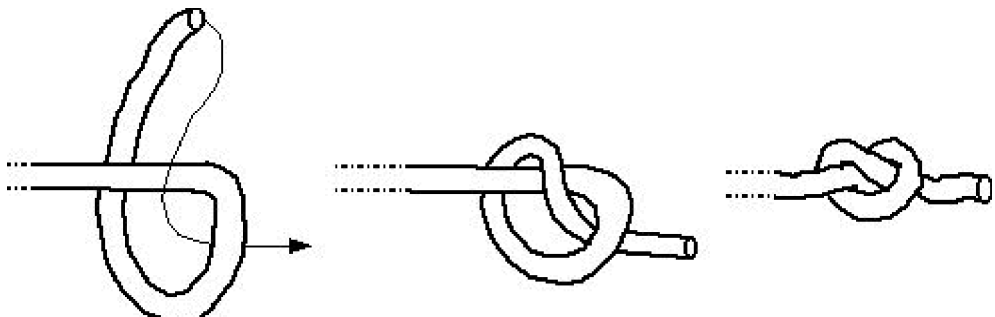
Enjoy!



Mounting Plate Dimensions



Overhand knot instructions



Dimming instructions

Compatible with industry standard TRIAC (forward-phase or leading-edge) & ELV (reverse-phase or trailing-edge) phase-cut dimmers.