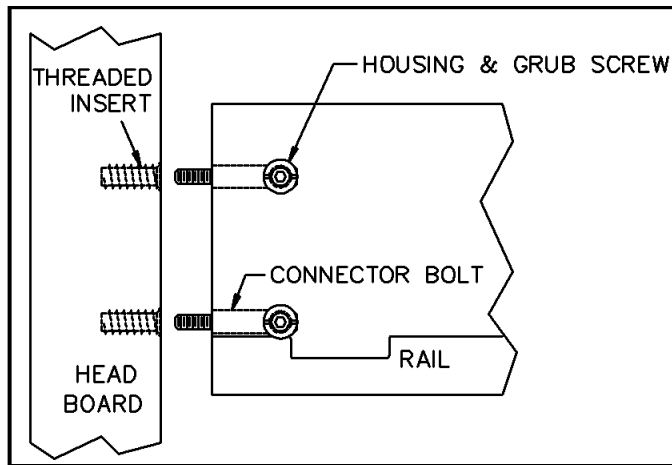
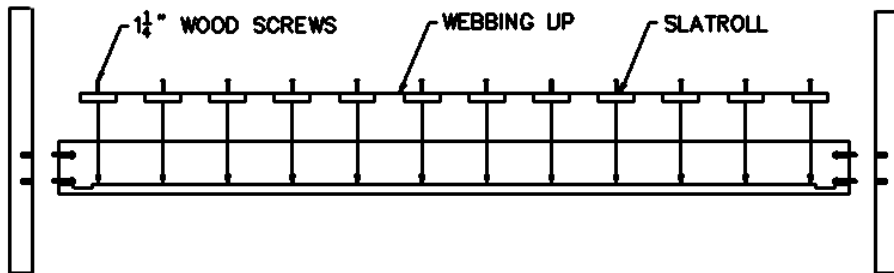


Steps 2-4: Bedrail



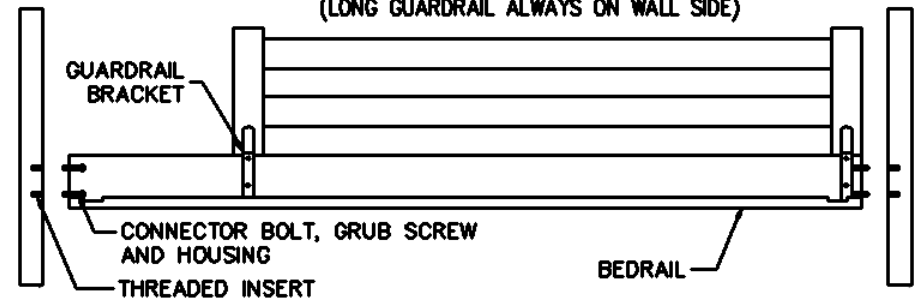
Step 5: Slatroll



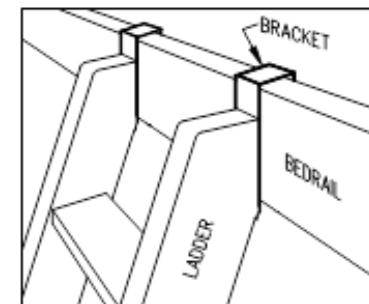
Steps 6-7: Lower Sections



Step 9: Guardrails GUARDRAIL (SHORT GUARDRAIL SHOWN) (LONG GUARDRAIL ALWAYS ON WALL SIDE)



Step 10: Ladder



Use only mattress which is 74"-75" long and 37 ½"-38 ½" wide on upper bunk. Ensure thickness of mattress and foundation combined does not exceed 7" and surface of mattress is at least 5" below upper edge of guardrails.

Replacement parts, including additional guardrails, may be obtained from any Room & Board store.

SAFETY WARNINGS

Follow the information on the warnings appearing on the upper bunk end structure and on the carton. Do not remove warning label from bed.

Always use the recommended size mattress or mattress support, or both, to help prevent the likelihood of entrapment or falls.

Surface of mattress must be at least 5 in. (127 mm) below the upper edge of guardrails.

Do not allow children under 6 years of age to use the upper bunk.

Periodically check and ensure that the guardrail, ladder and other components are in their proper position, free from damage and that all connectors are tight.

Do not allow horseplay on or under the bed and prohibit jumping on the bed.

Always use the ladder for entering and leaving upper bunk.

Do not substitute parts. Contact the manufacturer or dealer for replacement parts.

Use of a night light may provide added safety precaution for a child using an upper bunk.

Always use guardrails on both long sides of the upper bunk. If the bunk bed will be placed next to a wall, the guardrail that runs the full length of the bed should be placed against the wall to prevent entrapment between the bed and the wall.

The use of water or sleep flotation mattresses is prohibited.

Prohibit more than one person on upper bunk.

STRANGULATION HAZARD-- Never attach or hang items to any part of the bunk bed that are not designed for use with the bed; for example, but not limited to, hooks, belts and jump ropes.

Keep these instructions for future reference.

Maintenance: Periodically check to make sure all screws, bolts and fastening devices are tight.

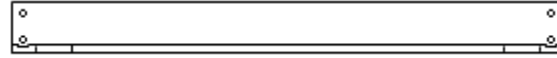
Cleaning: Mix a mild solution of gentle dishwashing liquid and water, apply to surface using a soft, clean cloth, then dry all surfaces with a soft, dry cloth. **NO ABRASIVES, SCOURING PADS, STEEL WOOL, OR COARSE RAGS** should be used to clean this fine furniture.

PARTS FOR LOFT BED

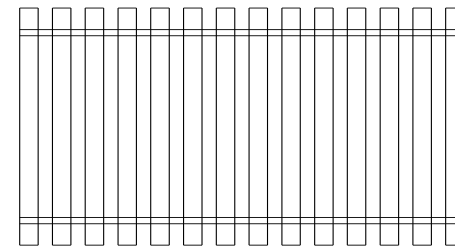
2 – LOFT BED PANELS



2 – LOFT BEDRAILS

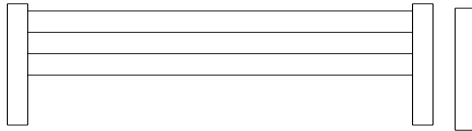


1 – SLATROLL

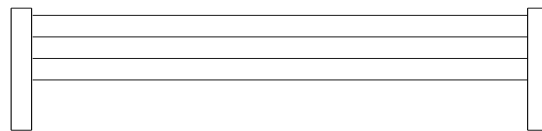


1 – SHORT GUARDRAIL

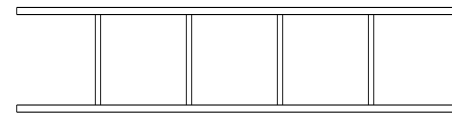
(screws enclosed in cardboard pad on bracket)



1 – LONG GUARDRAIL



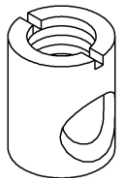
1 – LADDER



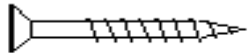
HARDWARE

Bag in Slatroll Box:

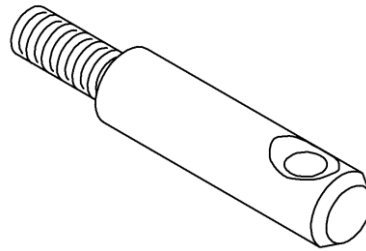
8 – STEEL HOUSINGS



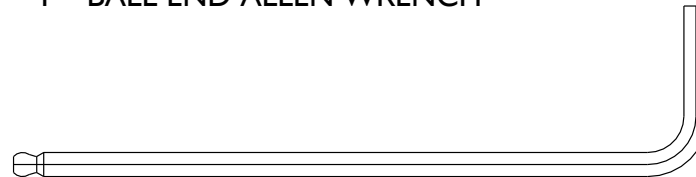
24 – WOOD SCREWS (1 1/4")



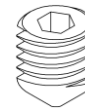
8 – CONNECTOR BOLTS



1 – BALL END ALLEN WRENCH

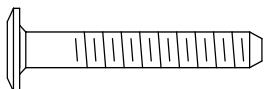


8 – GRUB SCREWS

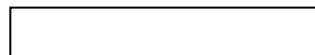


Bag in Loft Bedrail Box:

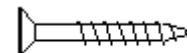
12 – DECORATIVE BOLTS (40 MM)



2 – STEEL PINS



2 – WOOD SCREWS (1")



PHILLIPS-HEAD SCREWDRIVER

TOOL NOT INCLUDED

I. Assemble Loft Bed

Step 1: Assemble the Upper Section (Bed) of the Loft first. Use the 2 Loft Bed Panels as the ends of the bed.

Step 2: On the bed end panels, screw a **Connector Bolt** into each of the threaded inserts completely. Back it off slightly in order to make the through-hole in the bolt horizontal. (The Connector Bolts do NOT need to be completely tightened.)

Step 3: Place one **Steel Housing** into each of the holes in the side of a Bedrail. Align connector bolts with the holes on the end of the **Bedrail**, slipping bolts through pre-drilled holes in the Bedrail and into the Housings.

Step 4: Place a **Grub Screw** inside each Housing, and use the **Allen wrench** to tighten the Grub Screw. Repeat with the other Bedrail on the same end panel, and then repeat Steps 3 & 4 for the opposite end panel.

Step 5: Unroll and lay the **Slatroll** inside the Bedrails, with the webbing facing up. With the **24 (1¼") Wood Screws** provided, attach the slats. The first slat must be 2 inches from the end of the Bedrail. Pull the Slatroll taught and secure the other end 2 inches from the end of the Bedrail on that side; then secure all other slats. The slats should be centered between the Bedrails, with a 1/8" gap between the end of the slat and the Bedrail. This permits the Guardrail bracket to slip in between the slat and the Bedrail.

II. Arrange and secure Lower Sections

Step 6: There are a variety of cases that may be used as Lower Sections. Arrange 2 Lower Sections in the desired orientation. If using a Desk Top, connect it to the Lower Sections using 4 of the 40MM bolts. (The Adhesive Tabs may be used to cover the remaining holes.)

Step 7: If using a Tall Panel as one of the Lower Sections, insert 2 **Steel Pins** into the holes on top of the Tall Panel. If not, do not use Steel Pins.

III. Place the Bed on top of the Lower Sections

Step 8: Lift bed and place it on top of the Lower Sections. (If using a Tall Panel, use the Steel Pins to align the bed with the Panel.) Secure the Lower Sections to the bed by using 2 of the 40MM bolts to screw up through the case top and into the insert in the Bedrail, and 2 more bolts to screw up through the case top and into the insert in the bottom of the Bed Panel. Get all 4 bolts started before tightening any. Repeat on other end if using two cases as Lower Sections. Tighten all bolts securely.

Step 9: Place the **Long Guardrail** on the wall side of the bed so that the brackets are on the inside of the Bedrail, and attach each bracket with **2 (1") Screws**. Place the **Short Guardrail** on the front Bedrail against one of the Footboards. (This allows an opening for the Ladder at the other end.) Screw the Short Guardrail brackets to the inside of the Bedrail.

Step 10: Attach the **Ladder** by hooking the bracket over the Bedrail. Use 2 wood screws to secure the bracket to the inside of the Bedrail.

Step II: Mattress may be placed with or without a platform board on Slatroll.