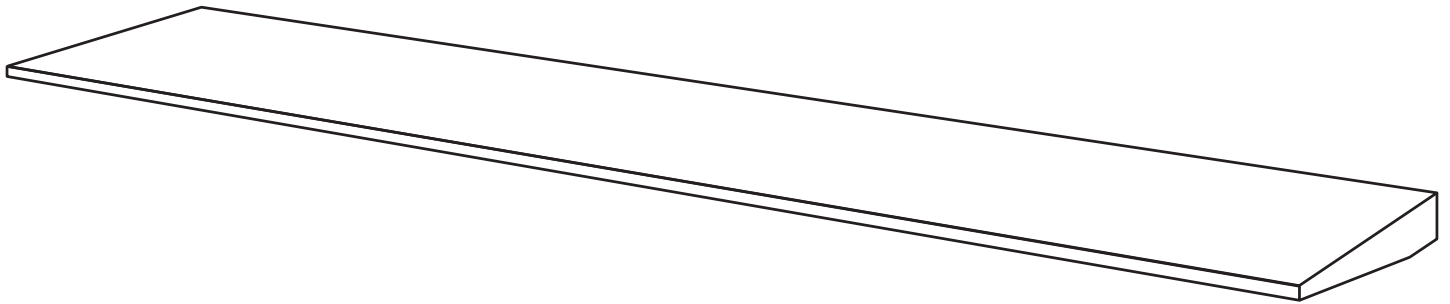


WEDGE WALL SHELF

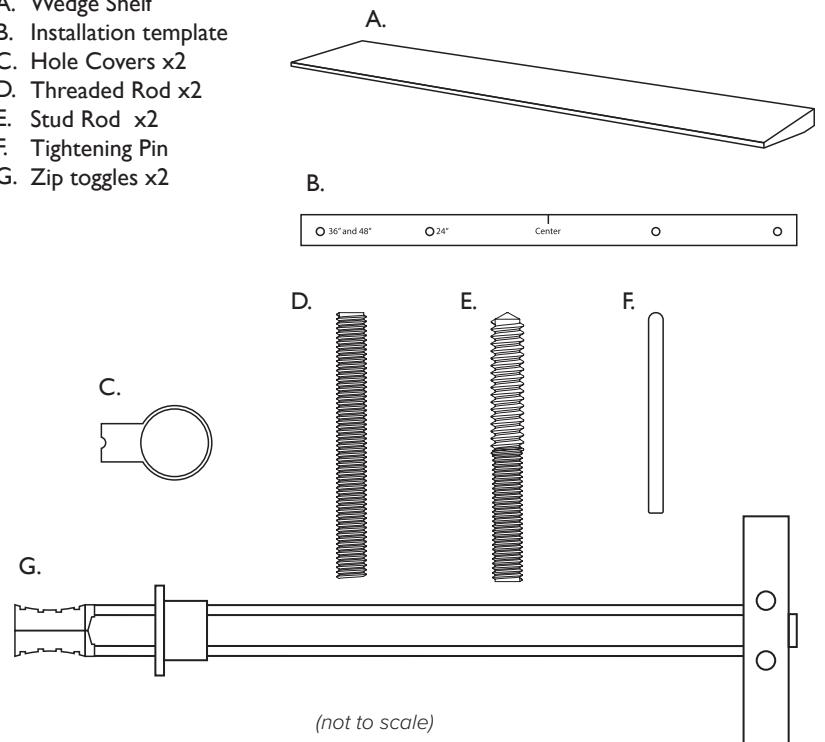


Recommended Tools

- pencil
- tape measure
- level
- 1/2" or 3/16" drill bit
- drill

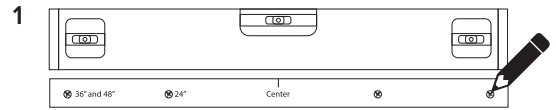
This Product Includes

- A. Wedge Shelf
- B. Installation template
- C. Hole Covers x2
- D. Threaded Rod x2
- E. Stud Rod x2
- F. Tightening Pin
- G. Zip toggles x2



Installation Instructions

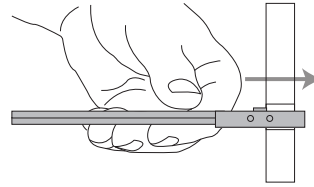
1 Using the level as a guide, hold the installation template against wall in desired location and mark holes that correspond to your shelf length.



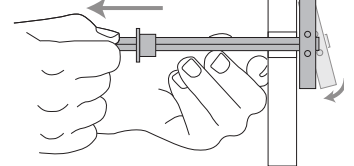
2 Choose the version of Step 2 that works best for your wall type. **Illustrations 2a-2e only apply to hollow wall installation.**

FOR HOLLOW WALL INSTALLATION, drill 1/2" holes on the marks. Install Zip Toggles. Once the Zip Toggles are secure, install the threaded rod (threads are the same entire length of the rod) by turning clockwise leaving approximately 7/8" of the threaded rod exposed.

2A

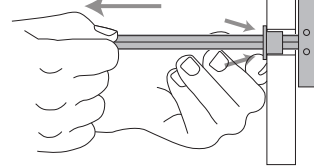


2B

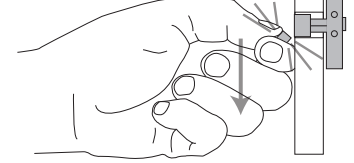


FOR STUD MOUNTING LOCATIONS, drill a 3/16" pilot hole approximately 1/2" deep into each stud. Install the stud rod, pointed end first, into the stud. Leave approximately 7/8" of the stud rod exposed.

2C



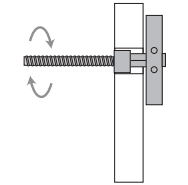
2D



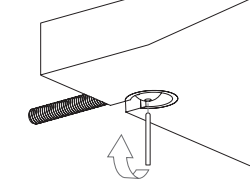
3 Remove magnetic hole covers from the underside of the shelf.

4 Carefully slide the shelf onto the threaded rods until the rods make contact with the circular fasteners. Rotate the circular fasteners clockwise using your fingers until the threads are engaged. Use the small rod in the hardware pack to tighten the shelves against the wall.

2E

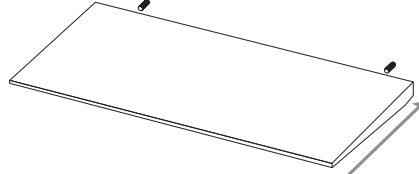


3



5 Install hole covers. Your shelf is now ready to use.

4



Care Instructions

Clean wood with a soft, damp cloth taking care to turn cloth frequently.