

# LW OFFICE CHAIR

## Features

- Made in Japan of imported materials
- Meets or exceeds ANSI/BIFMA X5.1-2017 standards for commercial use
- Okamura LW is GREENGUARD Certified®
- Adjustable seat height, reclining tension
- 10 year warranty



LW office chair 23w 22d 38-42h in moss

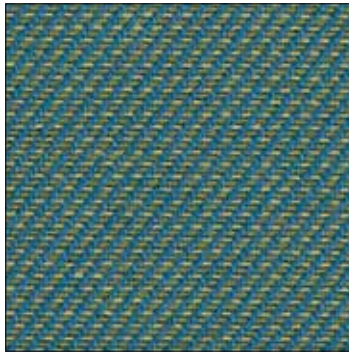
LW

Stocked fabric options

---



Grey



Teal



Moss



Dark Grey