

COPENHAGEN WITH CERAMIC TOP



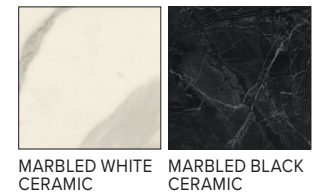
MADE IN North Dakota
of U.S. and imported materials

The Copenhagen nightstand combines durable high-quality veneer or low-emission MDF with the handcrafted expertise you expect from Room & Board. North Dakotan woodworkers hand-select the finest materials to create Copenhagen's subtle, distinctive detail: notched mitered corners. Choose the ceramic composite top option to enhance this nightstand's beauty and durability. Modern, functional and effortlessly stylish, Copenhagen will have a place in your home for years to come. To see the entire Copenhagen collection and its custom options, visit roomandboard.com.

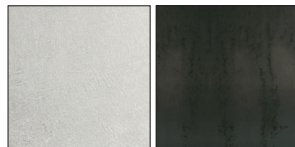
WOOD OPTIONS



CERAMIC OPTIONS



STEEL OPTIONS



STAINLESS
STEEL

NATURAL
STEEL

Lacquer finish (all woods) Our lacquer is a clear, low-sheen finish that seals and helps protect surfaces, while highlighting the natural beauty of the material. The finish holds up to daily use but can wear with excessive heat or moisture. Maintenance is simple—just wipe with a damp cloth and then dry immediately.

Powder-coat (colors) is a non-toxic coating of a dry powder that is heated to form a smooth, even surface more durable than conventional paint. Powder-coat finishes protect against heat and moisture and are resistant to changes in humidity.



19w 20d 20h
ONE-DRAWER
NIGHTSTAND
\$699
walnut \$799



19w 20d 25h
ONE-DRAWER
NIGHTSTAND
\$799
walnut \$899



26w 20d 25h
ONE-DRAWER
NIGHTSTAND
\$849
walnut \$949